



VISUAL DISPLAYS



The VDL Digital Canvas

The ultimate display solution
for Microsoft Teams Rooms,
Zoom and all hybrid meeting
and teaching spaces



At a glance...

- ALR (ambient light-rejecting) HD and 4K UHD 3LCD optical laser projection
- 120" and 140" (16:9) and 110" (21:9) as standard (bespoke options available)
- Choose wall mounted display or standalone unit
- Standards-based display solution for guaranteed results
- All-in-one system, saving on cost, planning and installation

VDL Digital Canvas

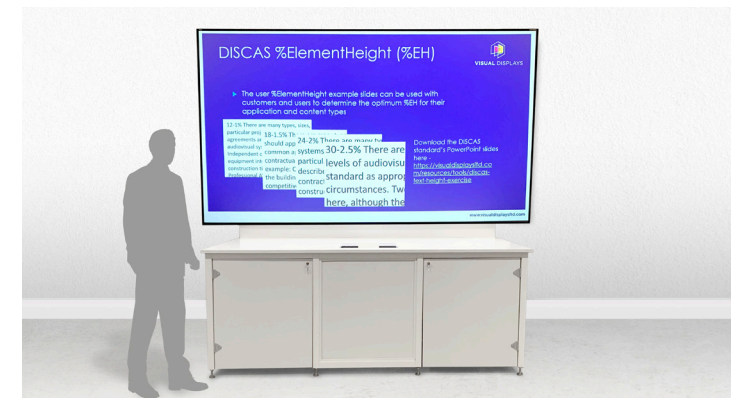
All in one large screen optical projection system based on AVIXA AV standards for guaranteed image quality and more effective meetings.

With exceptional image performance, the VDL Digital Canvas delivers an authentic and inclusive user experience for clients who want to create a more natural and effective working environment that bridges the gap between in-person and remote attendees. Offering complete fulfillment options for Microsoft's new Front Row concept for Teams Rooms, it's also future-proofed ready for resolution and quality advancements.

Give your meeting space the display of the future today!



VISUAL DISPLAYS



Contact our expert team on **01234 581 000** or via our **website here**



EPSON
EXCEED YOUR VISION

VDL Digital Canvas

Also available as a wall-mounted display
(no credenza unit)



VISUAL DISPLAYS

Key features

Screen

- dnp ALR optical screen
- 120" and 140" (16:9 aspect ratio) and 110" (21:9 aspect ratio) as standard. Bespoke sizes in any aspect ratio and up to any size - for any size and shape of room.
- 180-degree viewing angles
- Completely matt screen surface.
- Standard and bespoke options for both image luminance ('brightness') and contrast

Projector

- Epson HD and 4K UHD laser projector with comprehensive projector management software



Credenza Unit

- Self-contained freestanding unit - standard and bespoke finishes available plus structure only
- Roll-in 12U rack for pre-populating and testing - installs (and de-rigs) quickly with zero mess.
- All equipment contained within unit
- Runs off 13A plug (240V)- standard power socket.



Future-proofed:
ready for increases
in system resolution
and quality

All-in-one system,
saving on cost,
planning and
installation



ALR optical screen
- high-contrast,
powerful display,
even in brightly lit
conditions



VISUAL DISPLAYS

VDL Digital Canvas

Fraction of
dvLED cost



The very best option
for displaying and
engagement with
serious content

HD and 4K
UHD laser
projection
- flawless,
colour-rich,
detailed
images



Completely matt
screen surface. No
distracting veiling
reflections. Perfect
viewing surface.



Self-contained
freestanding units
- Zero impact on
room structure or
finish. Installs (and
de-rigs) quickly
with zero mess.
All equipment
contained within unit

Comfortable all-day
viewing without
eye strain



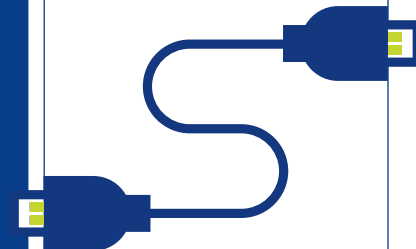
Standard sizes suitable
for most medium to
large meeting rooms.
Content is viewable
and readable from
everywhere in the room.
Remote participants can
be lifesize



Standards-based
(AVIXA) solution.
Defined size and
performance metrics
for measurable results



Can ensure each
display exactly
matches individual
room lighting
condition



Standard white
finish.

Bespoke finishes
available.



Most environmental
option. All parts
can be repurposed/
recycled. Epson
market leading
TCO standard



Ideal for enterprise-
level deployment
with rack unit pre-
populated to save
time on site



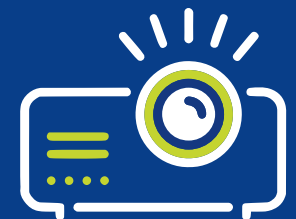
Epson
management
software to run
large estates
of displays
from remote
locations
anywhere



Ultra-low
running
costs -
runs off
standard
13A plug
(240V)



Zero maintenance
laser projector



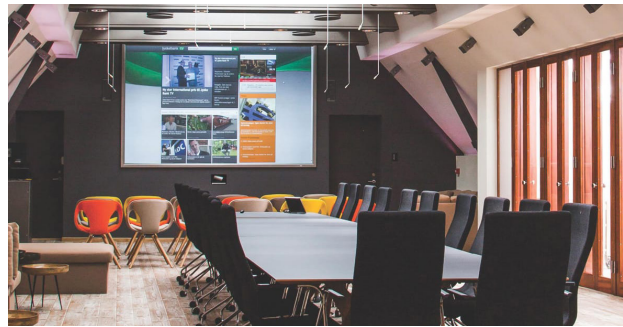


VDL Digital Canvas Standalone Unit

- 120" image size in 16:9 aspect ratio (2.56m wide) for rooms from approx. 6-7m deep
- 140" image size in 16:9 aspect ratio (3.1m wide) for rooms from approx. 8-10m deep
- 110" image size 21:9 aspect ratio (2.56m wide)
- Bespoke sizes available

What's included?

- Site survey and consultation meeting
- Full 3D CAD
- Full documentation for installation, liaising with trades and after-sales
- dnp ALR optical screen
- Epson HD and 4K UHD laser projector with UST lens
- Freestanding credenza unit (standard white, other finishes available to order)
- Installation optional



VDL Digital Canvas Wall-mounted Unit

- 120" image size in 16:9 aspect ratio (2.56m wide) for rooms from approx. 6-7m deep
- 140" image size in 16:9 aspect ratio (3.1m wide) for rooms from approx. 8-10m deep
- 110" image size 21:9 aspect ratio (2.56m wide)
- Bespoke sizes available

What's included?

- Site survey and consultation meeting
- Full 3D CAD
- Full documentation for installation, liaising with trades and after-sales
- Wall-mounted dnp ALR optical screen.
- Ceiling-hung Epson HD and 4K UHD laser projector with comprehensive projector management software with standard or UST lens
- Installation optional



VDL Digital Canvas Curved Display

Designed specifically to provide enhanced MS Teams Front Row experiences, the unique VDL Digital Canvas Curved Display features the same technology and specification options as the VDL Digital Canvas - but with a curved screen for a more intimate and impactful user experience, enhancing the feeling of closeness and spontaneity between in-person and remote participants.

- Curved screen 120" image size in 16:9 aspect ratio
- Curved screen 140" image size in 16:9 aspect ratio
- Curved screen 110" image size 21:9 aspect ratio
- Bespoke sizes available

What's included?

- Site survey and consultation meeting
- Full 3D CAD
- Full documentation for installation, liaising with trades and after-sales
- dnp ALR optical curved screen
- Epson HD and 4K UHD laser projector with comprehensive projector management software with standard or UST lens
- Freestanding credenza unit (standard finish white, other finishes available to order)
- Installation optional

Contact our expert team on **01234 581 000** or via our **website here**



Let us be your guide

Visual Displays can guide you away from the common pitfalls and mistakes when choosing the correct display for your campus.

With years of standards-based knowledge and vast HE and FE displays expertise we will create and guarantee the very best results, with a bespoke solution that gives staff and students the best possible user experience.

Can you see me at the back?

Low-quality washed out images

Eye-strain

'Cheap seats'

Contact our expert team on **01234 581 000** to discuss your next project

The greenest and most environmentally-beneficial display technology

Our VDL Digital Canvas range offers the lowest cost at every phase, from installation, through running and maintenance costs, to end of life disposal.



Visual Displays - the displays experts



VISUAL DISPLAYS

Visual Displays Limited
Unit 7, i-Worx
Innovation Way
Wootton, Beds
MK43 9SP
UK

E: sales@visualdisplaysltd.com

T: +44 (0)1234 581 000

www.visualdisplaysltd.com